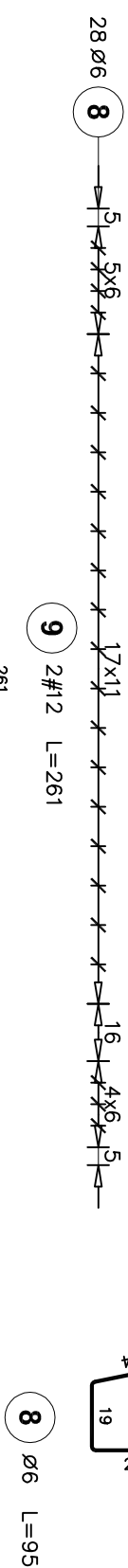
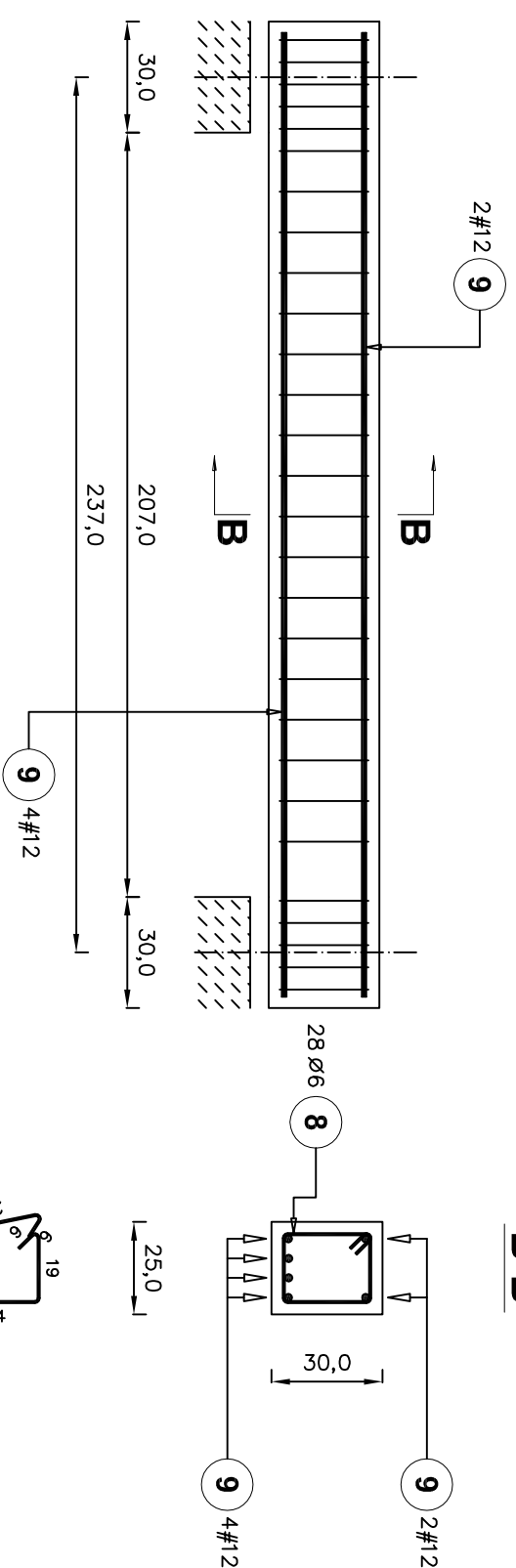
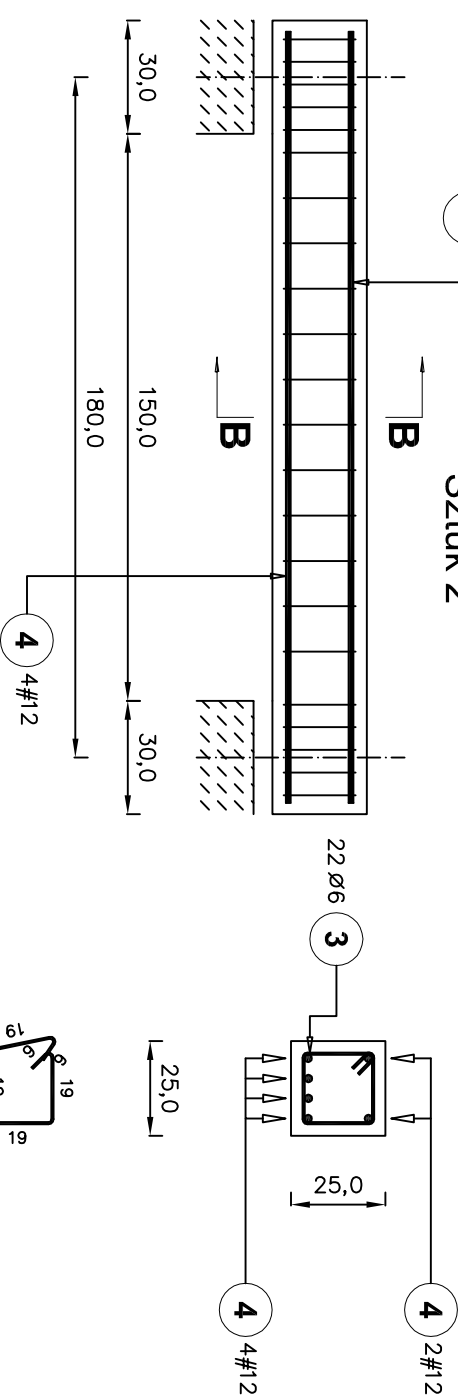


N7-nadproże żelbetowe
Pozycja: 1.1.1



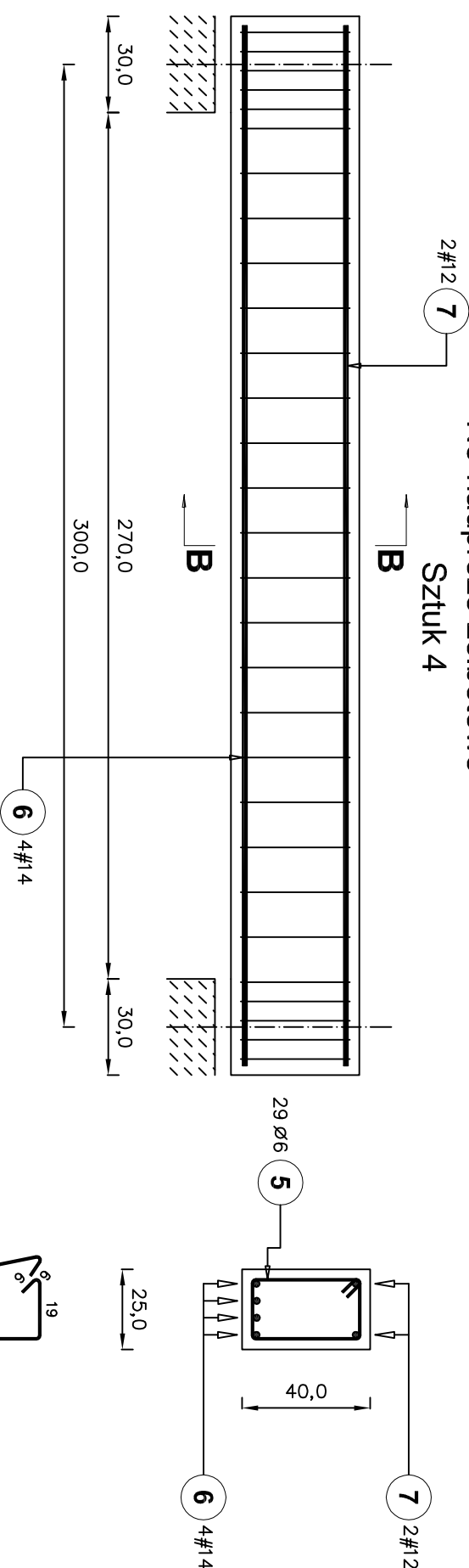
9 4#12 L=261
261

N2-nadprože želbetowe



4 2#12 L=204

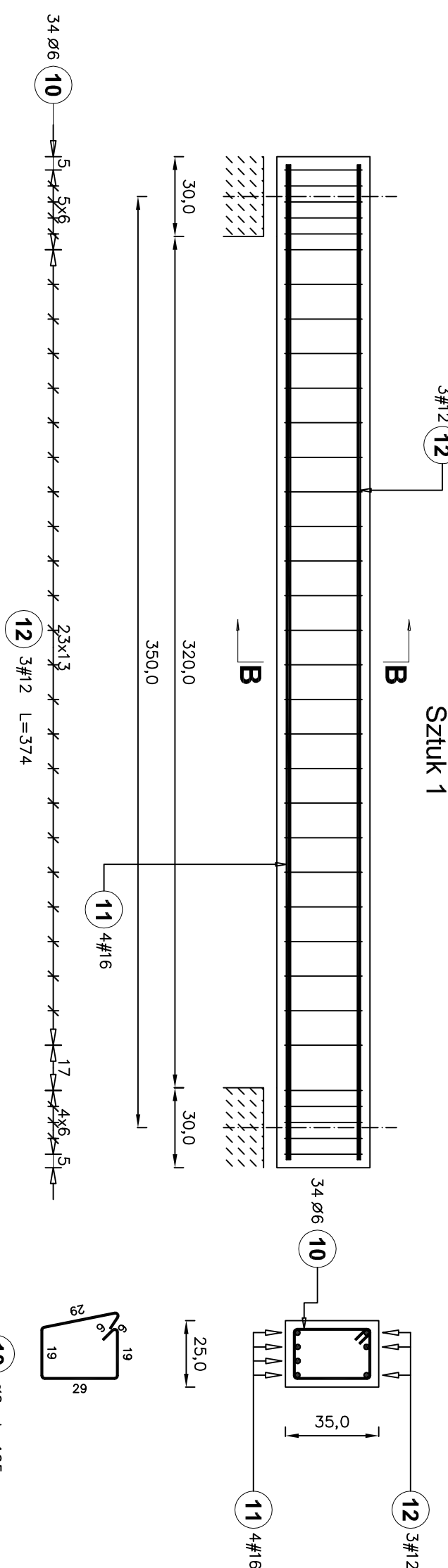
N3-nadprože želbetowe



7 2#12 L=324

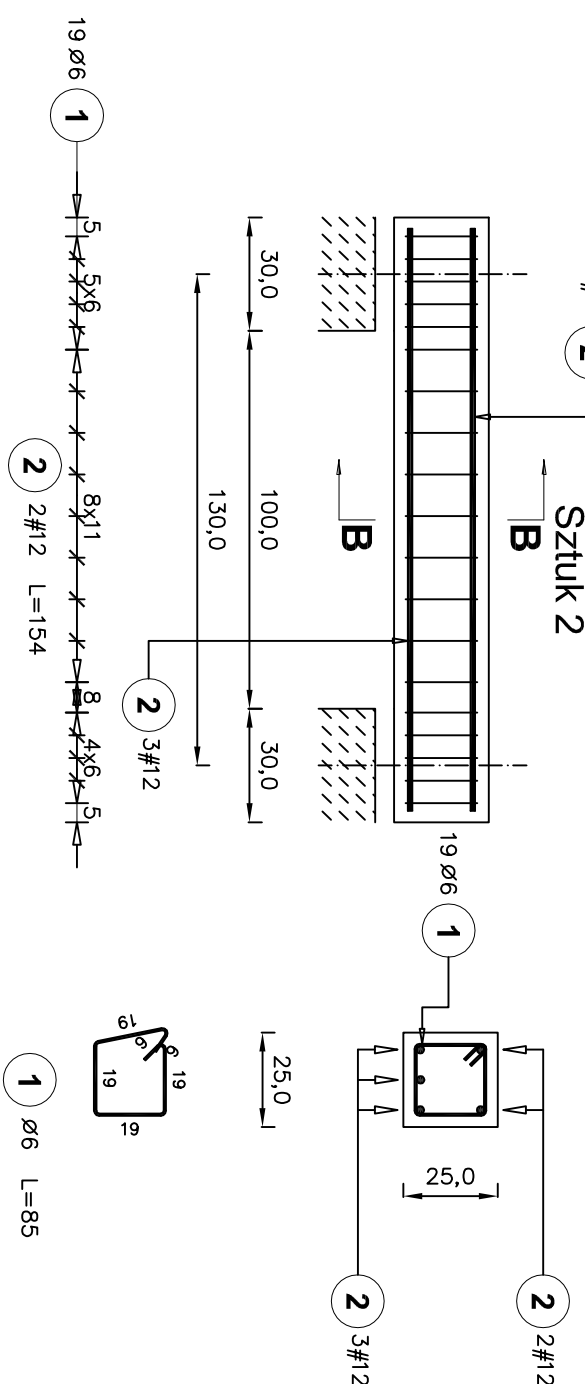
6 $4\#14$ $L=324$
 324

N8-nadprože želbetowe



11 4#16 L=374
374

N1-nadprože želbetowe



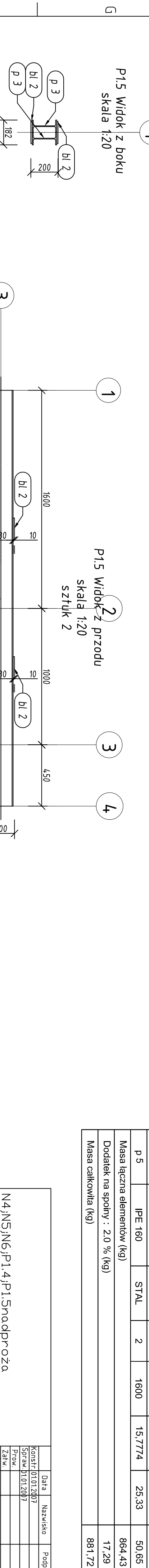
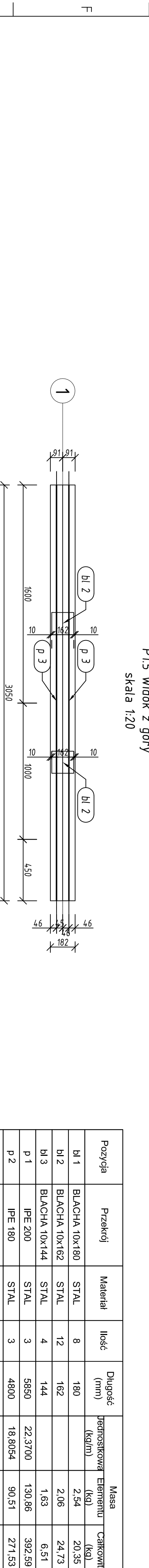
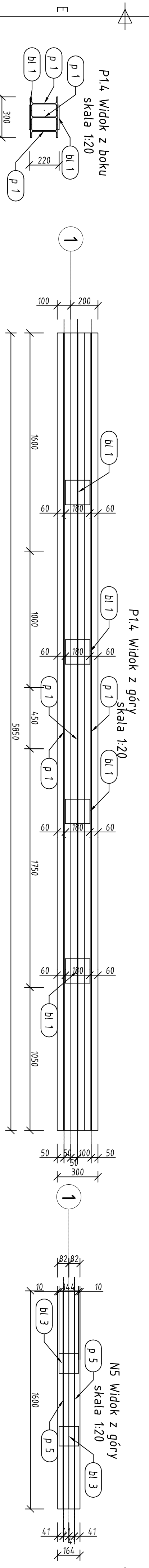
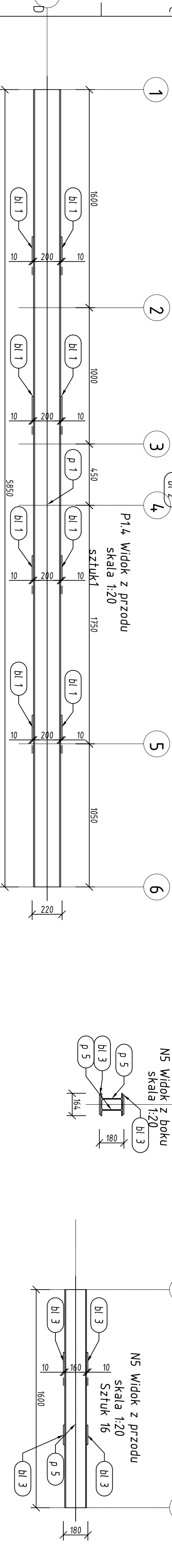
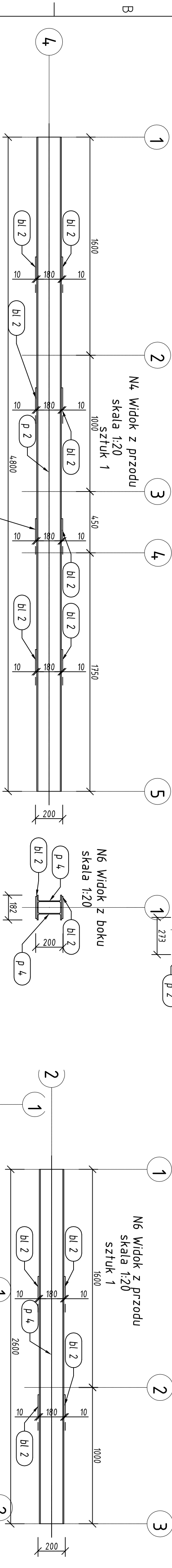
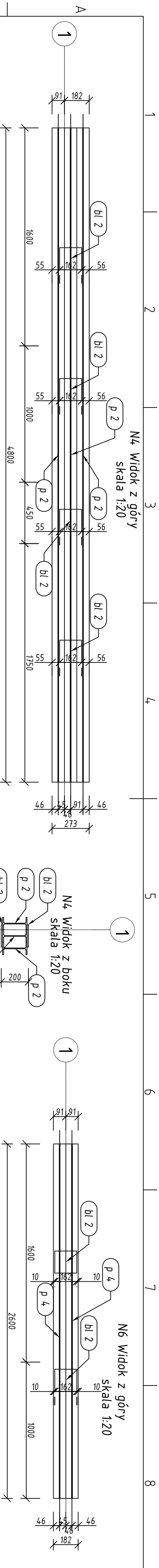
2 3#12 L=154
154

Zestawienie stali

Poz.	Stoł	Długość (cm)	Liczba			Długość łączna (m)			
			w elementach	elementów	ogółem	A-0 ø 6	# 12	A-III # 14	# 16
	A-0 ø	A-III #							
1	6	85	19	2	38	32,30			
2	12	154	5	2	10		15,40		
3	6	85	22	2	44	37,40			
4	12	204	6	2	12		24,48		
5	6	115	29	4	116	133,40			
6	14	324	4	4	16			51,84	
7	12	324	2	4	8		25,92		
8	6	95	28	4	112	106,40			
9	12	261	6	4	24		62,64		
10	6	105	34	1	34	35,70			
11	16	374	4	1	4				14,96
12	12	374	3	1	3		11,22		
Długość wg średnic (m)						345,20	139,66	51,84	14,96
Masa 1 m pręta (kg/m)						0,22	0,89	1,21	1,58
Masa łączna wg średnic (kg)						76,63	124,02	62,73	23,64
Masa łączna wg gatunku stali (kg)						76,63		210,38	
Ogółem (kg)									287,02

Beton B-20
Stal A-0 (St0s)
Stal A-III (34Gs)

[illegible]

[illegible][illegible]